

CLASS A OFFICE FOR LEASE



Keys Commercial



PROPERTY DESCRIPTION

3223 Arapahoe Avenue offers a great mix of professional tenants in a high-end, Class A building with a coveted Boulder address. The property is just minutes from 29th Street Mall and a wide selection of many other terrific amenities and is in close proximity to Downtown Boulder, Foothills Parkway, US Highway 36, Boulder Creek Path and RTD access. The building features an abundance of natural light, professional finishes, ample employee and visitor parking and on-site property management.

CENTRAL BOULDER

Class A View Space

Suite 300-4385 Square feet

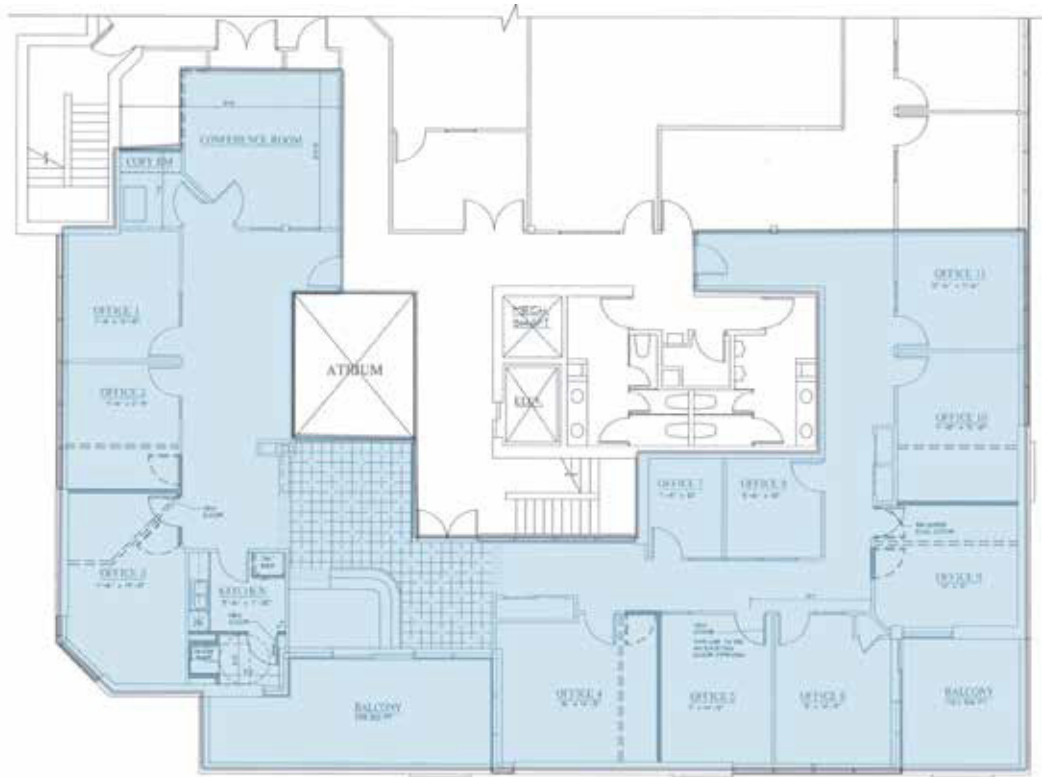
Suite 325-2121 Square feet

6506 Contiguous Square feet Available

3223 ARAPAHOE AVE

3223 Arapahoe Ave, Boulder, CO 80302

FLOOR PLAN



BASIC DETAILS

PROPERTY:
Office

PRICE:
\$22 PSF

EXPENSES:
\$20.02/SF

LISTING:
For Lease

SQUARE FOOTAGE:
Suite 325-2121 SF
Suite 300-4,385 SF

FEATURES:
Free Onsite Parking



Keys Commercial


MAP



AGENT INFO



GEOFFREY E. KEYS

 303.214.1540

 keys@keys-commercial.com

